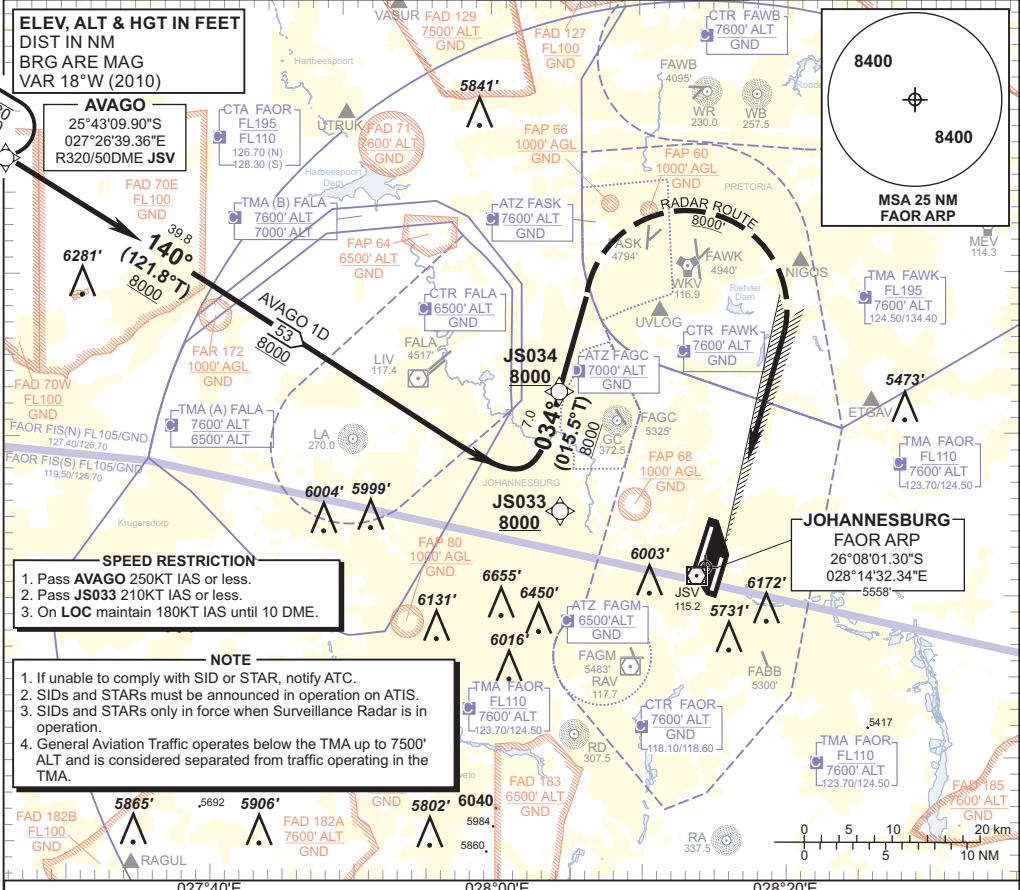


**STANDARD ARRIVAL
CHART -
INSTRUMENT
(STAR)**

TRANSITION ALTITUDE
8000'
TRANSITION LEVEL
ATC

RADAR APP S 124.50 TWR E 118.60
E 124.50 W 118.10
W 123.70 ATIS 126.20
DIR 121.40 115.20
ACC N 126.70 SMC 121.90

JOHANNESBURG
(O.R. TAMBO INTERNATIONAL)
RNAV (GNSS) RWY 21L
AVAGO 1D



SPEED RESTRICTION

1. Pass AVAGO 250KT IAS or less.
2. Pass JS033 210KT IAS or less.
3. On LOC maintain 180KT IAS until 10 DME.

NOTE

1. If unable to comply with SID or STAR, notify ATC.
2. SIDs and STARs must be announced in operation on ATIS.
3. SIDs and STARs only in force when Surveillance Radar is in operation.
4. General Aviation Traffic operates below the TMA up to 7500' ALT and is considered separated from traffic operating in the TMA.

CHANGE: SPEED RESTRICTION BLOCK

**AVAGO 1D:
RWY 21L**

Leave AVAGO for JS033. At JS033 turn left to JS034 for radar vectoring onto the ILS LOC RWY 21L.

COMMUNICATION FAILURE PROCEDURE (Squawk 7600)

Before AVAGO: Proceed to AVAGO and enter the AVAGO RNAV (GNSS) hold. Hold at last assigned level for minimum 5 MIN then descend to FL130 in the hold or maintain last assigned level if below FL130. Leave AVAGO on the "After AVAGO" Communication Failure Procedure.

After AVAGO: Continue on the AVAGO 1D RNAV (GNSS) STAR. At JS034 proceed to UVLOG and continue on the RNAV (GNSS) RWY 21L and intercept the ILS LOC RWY 21L and land RWY 21L.

Note: Aircraft entering the TMA at FL 110 and below are to enter the AVAGO RNAV (GNSS) hold at last assigned level and continue on the routing for the AVAGO 1D STAR.

Caution: Holding patterns below FL110 will be conducted outside of controlled airspace. Pilots to take note of the appropriate FADs, FAPs, FARs as well as the Magalies Glider Window (FL110 - FL145).

In the event of a missed approach with the intention of diverting to an alternate aerodrome, proceed as follows:

- To the North and North-West: Follow the routing for the VASUR 3B SID.
- To the North-East: Follow the routing for the EGMEN 2B SID (Jet ACFT) or EXOBI 3B SID (Turboprop ACFT).
- To the South-East: Follow the routing for the APDAK 2B SID.
- To the East and South-East: Follow the routing for the RAGUL 3B SID.